

GLOBAL SALES NETWORK

ELECTRIC TOW TRACTOR

20-25t



CE CERTIFICATE



ISO14001: 2004



ISO9001: 2008

HANGCHA GROUP CO., LTD.
(Zhejiang Hangcha Imp.&Exp.Co.,ltd.)

www.hcforklift.com

Add:398 Shi Qiao Road, Hangzhou Zhejiang province, China(310022)

Factory site:No.88,Donghuan Rd.,Economic Development Zone Lin'an,Zhejiang,China(311305)

Fax: +86-571-88926789 88132890

E-mail: whsales@hcforklift.com

sales@hcforklift.com

HANGCHA GROUP CO., LTD. Reserves the right to make any changes without notice concerning colors, equipment, or specifications detailed in this brochure, or to discontinue individual models. The colors of trucks, delivered may differ slightly from those in brochures.

2014 VERSION 1/ COPYRIGHT 2014/04

HANGCHA GROUP CO., LTD.

Appearance

- Body choosing modern large circular arc streamline surface model, is in accordance with international design trend. It's suitable for tractor, pulling, pushing and handling operations.

Reliability

- The battery is dropped down to the lowest part of frame, this gives the tractor excellent stability because low center of gravity.

Safety

- High frequency MOSFET controller provides accurate control of travelling, lifting, and better adjustable performance and better match with the motor. Secure stopping on ramp function is also provide.

Thanks to MOSFET controller. Motor brake is for regenerative braking during deceleration, direction, changing, and downward slope. The regenerative braking is more energy saving and effectively.

- X-type arrangement of dual piping, distribute the pressure by front and rear, the braking system is safe, stable and reliable. The design of vacuum drum ensure the braking system working as usual.
- The electrical switch can cut off the power.

Comfort

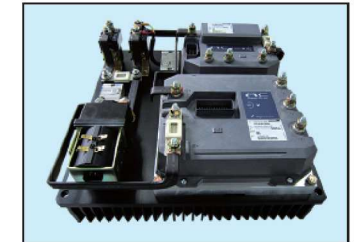
- Adopt the new digital dashboard and rocker switch, the status of vehicle be clear at a glance, simple, reliable and intuitive.
- Adopt horizontal cylinder steering axle and full hydraulic steering gear, the steering force is less than 10N. Optional synchronous steering system provides good stability, especially suitable for long-distance road in the airport and so on.
- The advanced floating suspension system and long wheelbase design, ensure the comfort of the vehicle.
- The advanced floating suspension system and long wheelbase design, ensure the comfort of the vehicle.



- Optimized design structure to offer a good visibility and easier operation, provides good sealing, sound insulation, heat insulation, vibration isolation. Low step and capacious room will be much appreciated by operator who have to get on and off.
- Adjustable steering wheel and 150mm adjustable distance of seat ensure driver maximum comfortable and minimum fatigue.

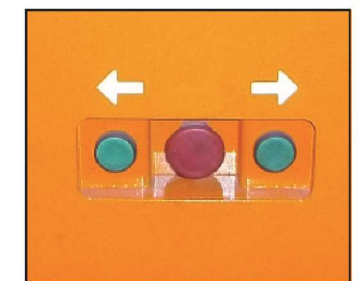
Advance

- New AC system provide more power, more precise performance of speed control, more safety and reliability, regenerative system.



Advanced full-AC power system, full closed, compulsory air-cooled, reliable and safe

- High effective AC system prolong the working time.
- Adopt the international first-class brand of LCD, with the battery indication, self diagnosis function, it's no need handset unit. The display can make changes to the electronic control parameters, you can read the fault code clearly from it.
- There are switch in the rear: Including Forward/Reverse inching switch and emergency disconnect switch.



- There are two methods to exchange battery: Lifting-exchange and side-exchange battery, it's convenient for user.
- The controller is enclosed to avoid dust and water, it can provide forced cooling, heat dissipation and control the direction of the wind.
- The size of platform of the rear : 1300mm× 1638mm, it can be used as loading platform, maximum load weight is 500Kg.

Environmental protection

- Low noise, low shake, energy efficient, environmental protection.
- Vehicle use non-asbestos material.

Easy maintain

- Electric parts adopt international famous brand are to ensure the reliability of the performance.

- Maintenance free driving motor is no need to replace the carbon brush, low service cost.
- You can open and close the battery cover hood for daily checkup the battery, motor and controller. It's easy to access inner of battery cover for maintenance.

Standard Feature

- Emergency disconnect switch
- Head lamp

- Turning lamp
- Rear combined LED
- Sun shield
- Front wiper
- Front wiper washer fluid
- Adjustable device for steering wheel
- Horn
- Buzzer
- Retroreflector
- Rear view mirror
- Dome light
- Fan

- Large rubber pedal pad
- AC drive system
- Full hydraulic steering
- Hand grip
- Full closed cab
- Vacuum assistant braking system
- Standard seat
- Standard battery
- Side-exchange battery
- Toolbox
- Inching switch
- Traction pin

Options

- Warning lamp
- High capacity national battery
- Excellent performance import battery
- Battery charger
- Rear working lamp
- Speed limit alarm
- Different height of traction pin
- Semi-closed cab
- Steam air heater
- Synchronous steering system
- Hydraulic assistant brake system
- Front bumpers
- Front pothook
- Extinguisher
- Solid tyre
- Suspension seat
- Speed limit
- Rear wiper
- Rear wiper washer fluid
- Long-distance control system
- Full hydraulic brake
- Tractor pin operation device

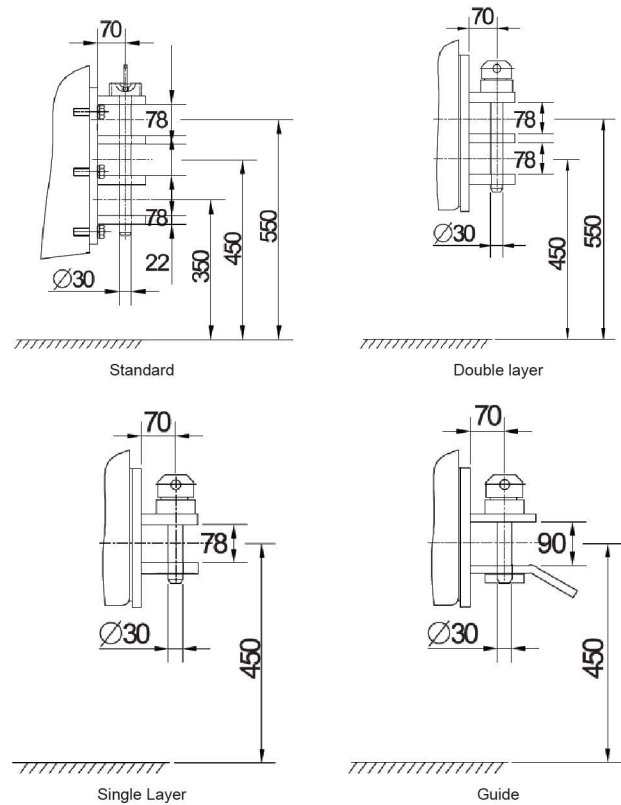
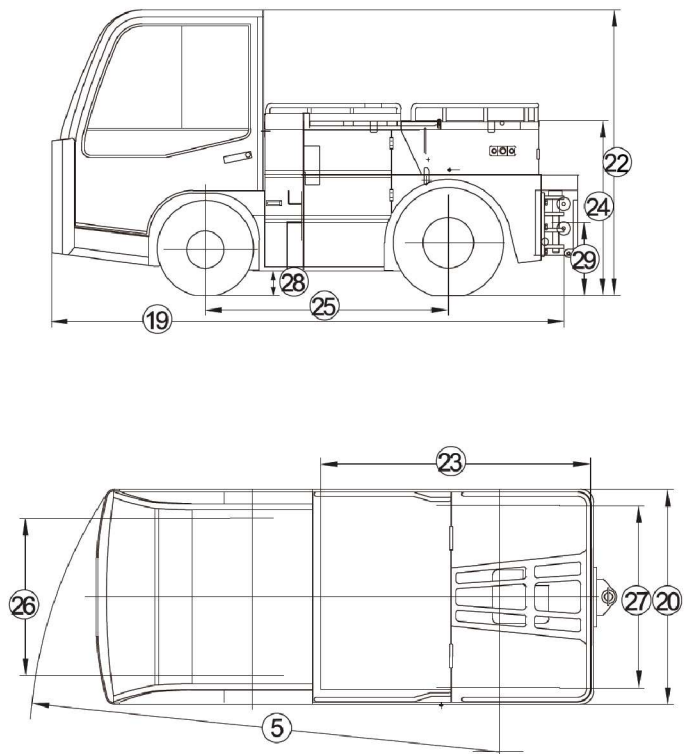


20-25t electric tow tractor specification

| | Manufacture | | | HANGCHA | | | | |
|----------------|-------------|---|------------------|----------------------|----------------------|------------------------|------------------------|--------------------|
| | Model | | | QSD20-D3 QSD20-C3 | QSD25-D3 QSD25-C3 | QSD20-D2T QSD20-C2T | QSD25-D2T QSD25-C2T | |
| Performance | 1 | Pothook Drawbar Pull(1 Hour) | | N | 5000 | 6300 | 5000 | 6300 |
| | 2 | Max.Drawbar Pull | | N | 16000 | 20000 | 18000 | 21000 |
| | 3 | Tow weight in dry concrete level off the road | | Kg | 20000 | 25000 | 20000 | 25000 |
| | 4 | Max.Travel speed | | Km/h | 25 | 25 | 20 | 20 |
| | 5 | Turning radius | | mm | 2825 | 2825 | 2825 | 2825 |
| | 6 | Gradeability without load | | % | 30 | 30 | 30 | 30 |
| Weight | 7 | Weight distribution | Front wheel | Kg | 1640 | 1600 | 1640 | 1600 |
| | 8 | | Rear wheel | Kg | 1910 | 2150 | 1910 | 2150 |
| | 9 | Sevice weight | | Kg | 3550 | 3750 | 3550 | 3750 |
| Tractor Motor | 10 | Rated capacity/r./min | | KW/(r/min) | 23/2063 | 23/2063 | 23/2063 | 23/2063 |
| | 11 | Rated Voltage/current | | V/A | 55/295 | 55/295 | 55/295 | 55/295 |
| | 12 | Excitation mode | | | AC | AC | AC | AC |
| | 13 | Quota | | | 60 Minutes | 60 Minutes | 60 Minutes | 60 Minutes |
| | 14 | Insulation class | | | F | F | F | F |
| Steering Motor | 15 | Rated capacity/r./min | | KW/(r/min) | 1.0/1400 | 1.0/1400 | 1.0/1400 | 1.0/1400 |
| | 16 | Excitation mode | | | DC | DC | AC | AC |
| Controller | 17 | DANAHER | | D | MOSFET/Semi-AC | MOSFET/Semi-AC | MOSFET/Full-AC | MOSFET/Full-AC |
| | 18 | CURTIS | | C | MOSFET/Semi-AC | MOSFET/Semi-AC | MOSFET/Full-AC | MOSFET/Full-AC |
| Dimensions | 19 | Overall length | | mm | 3140 | 3140 | 3140 | 3140 |
| | 20 | Width | | mm | 1300 | 1300 | 1300 | 1300 |
| | 21 | Height | Without cab | mm | 1200 | 1200 | 1200 | 1200 |
| | 22 | | with cab | mm | 1760 | 1760 | 1760 | 1760 |
| | 23 | Load platform | Length | mm | 1630 | 1630 | 1630 | 1630 |
| | 24 | | Height | mm | 1070 | 1070 | 1070 | 1070 |
| | 25 | Wheel base | | mm | 1490 | 1490 | 1490 | 1490 |
| | 26 | Thread | Front | mm | 1124.5 | 1124.5 | 1124.5 | 1124.5 |
| | 27 | | Rear | mm | 1100 | 1100 | 1100 | 1100 |
| | 28 | Ground clearance | | mm | 140 | 140 | 140 | 140 |
| | 29 | Towing coupling height | | mm | 550/450/350 | 550/450/350 | 550/450/350 | 550/450/350 |
| Other | 30 | Tyres | Front | | 6.50-10-10PR/2 | 6.50-10-10PR/2 | 6.50-10-10PR/2 | 6.50-10-10PR/2 |
| | 31 | | Rear | | 7.00-12-12PR/2 | 7.00-12-12PR/2 | 7.00-12-12PR/2 | 7.00-12-12PR/2 |
| | 32 | Battery | Voltage/Capacity | V/A.H | 80/500 | 80/500 | 80/500 | 80/500 |
| | 33 | | Serviec weight | Kg | 1350 | 1350 | 1350 | 1350 |
| | 34 | Service braking | | | Vacuum power brake | Vacuum power brake | Vacuum power brake | Vacuum power brake |

Remark:Semi-AC:Tractor motor(AC)+Steering motor(DC), Full-AC:Tractor motor(AC)+Steering motor(AC).

Dimensions



Dimensions & Type of pin

20-25t electric tow tractor :Tow weight/Grade Unit:Kg

| Tow weight | | Model | QSD20 | QSD25 |
|-----------------|----|-------|-------|-------|
| Level load | 0° | | 20000 | 25000 |
| | 1° | | 12500 | 15500 |
| | 2° | | 10300 | 12900 |
| | 3° | | 8800 | 10900 |
| | 4° | | 7500 | 9400 |
| | 5° | | 6500 | 8100 |
| Grade (Degrees) | 6° | | 5700 | 7100 |

Remark:1.5 Min start on slope, dry concrete level off the road(Rolling resistance coefficient of 0.018).
2.Specifications are subject to change without notice.

Battery configuration table

| Factory | Import | | | | Domestic | |
|---------------|----------|--------|------|-----|----------|-----|
| | HOPPECKE | HAWKER | FAAM | GS | 淄博 | 迅启 |
| Type/Capacity | 500 | 500 | 500 | 480 | 480 | 520 |
| | 560 | 560 | 580 | 560 | 560 | 580 |
| | 600 | ● | ● | 600 | 600 | 600 |
| | 620 | 620 | 620 | ● | ● | ● |
| | ● | ● | 640 | ● | ● | ● |